

Importing a DWG

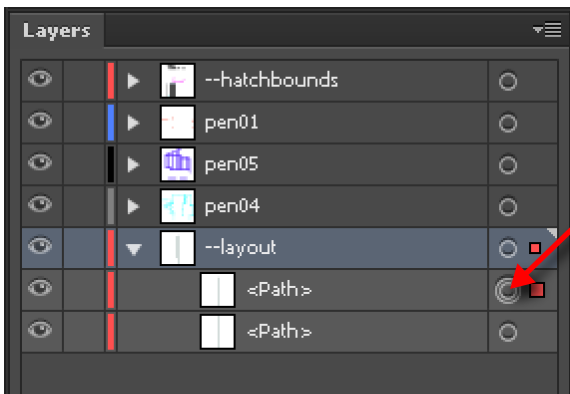
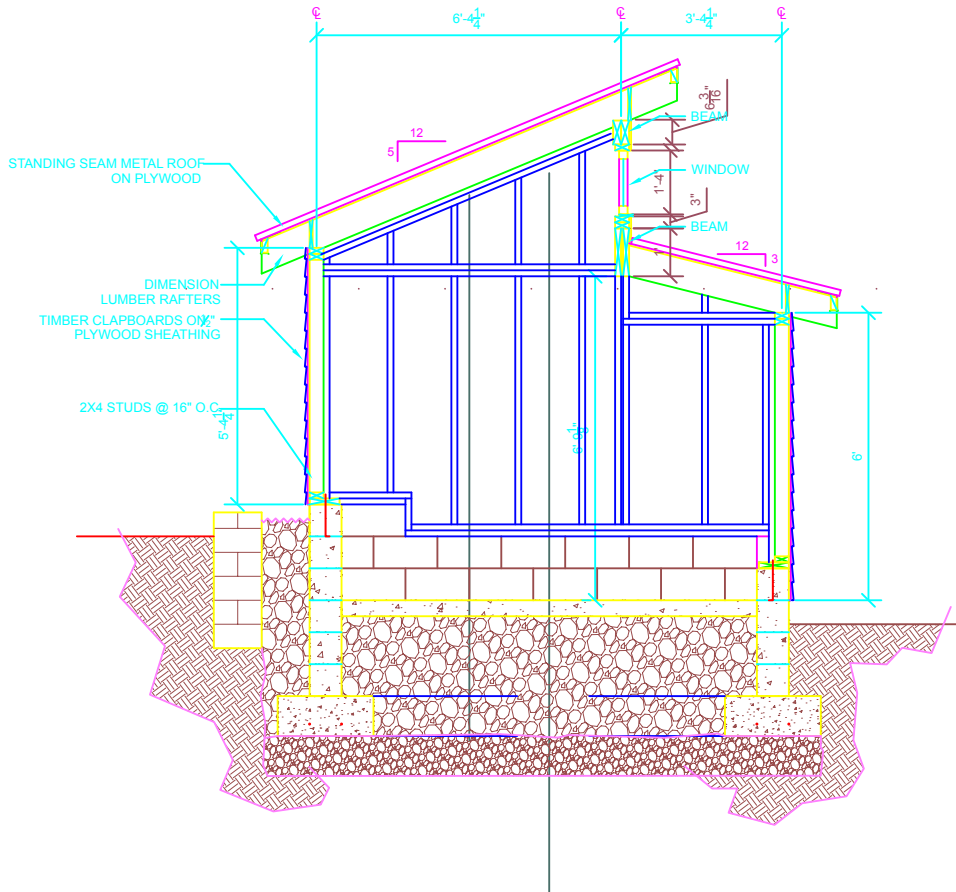
File: Open: Shed-Section.dwg

Scale: 1 Unit = 0.0208333 inches

for quarter scale, 1/48 = 0.0208333

Select: Select All. Object: Ungroup

do this just once. Every AutoCAD entity gets put in its own useless group.

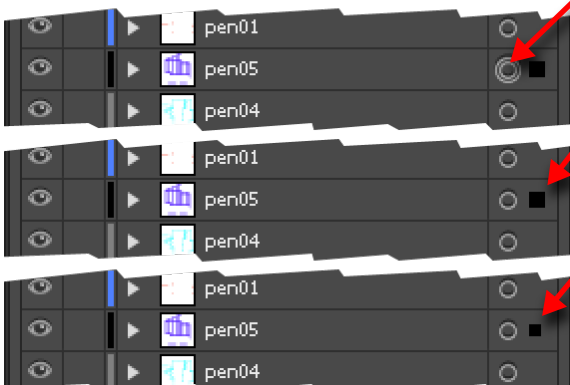


Click on the circle to select an object. The circle displays double and a big square shows up. The layer the object is in also gets a small square.

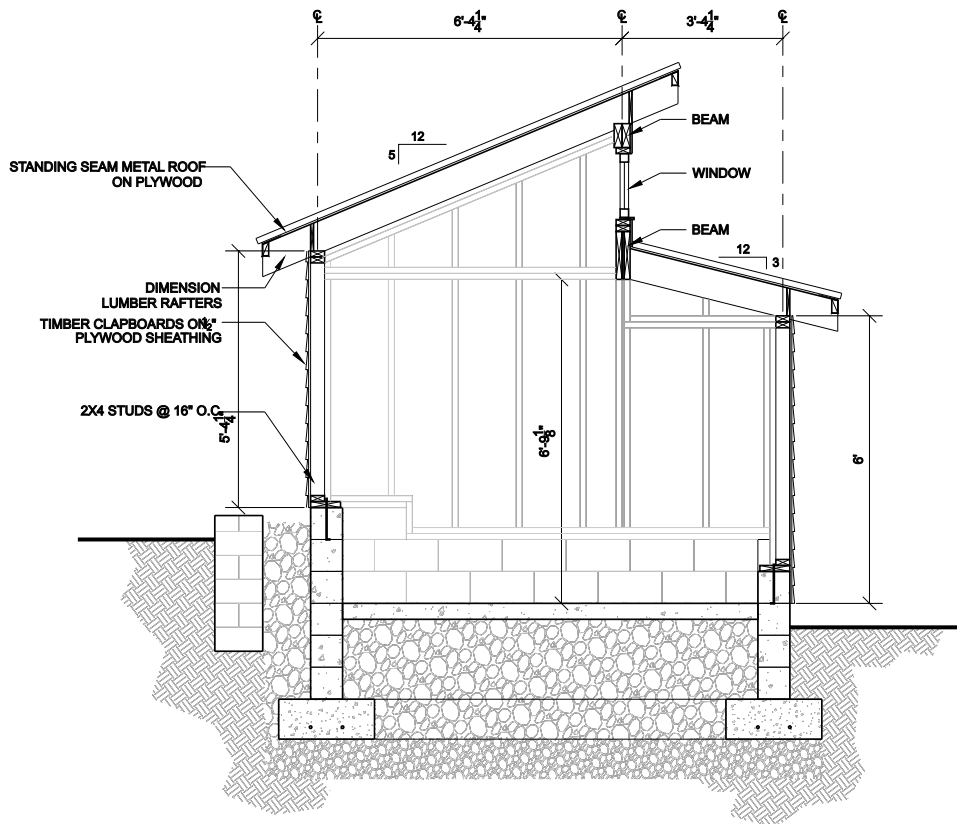
Click on the circle to select the layer. Appearance changes are made to the layer not the objects inside it.

Click next to the circle to select all of the objects. Appearance changes are made directly to the objects.

The square shows where selected objects are. You can click and drag the square to a different layer and the objects will move to that layer.



Making a Drawing Look Like A Drawing



Working with the Layers Palette, leave the layers “collapsed.” There is no need to select individual objects for a while. We’ll work just by clicking on a layer’s circle and modify the appearance of the layer.

Select layer “pen05” by clicking on the circle next to its name.

Now change the stroke color to light gray and the stroke weight to 0.25pt. (You can also use millimeters if you are more used to them for pen widths.)

Now double click the layer name and change it to “Studs-Distant”.

Select layer “pen06”. Set it to black, 0.25pt, “Light-Very”.

Keep changing layers until it looks good. Change layer names to help you keep track.

Use the ‘eye’ icon on the left of the layers palette to turn off “--hatchbounds,” “--noproint,” “--layout.” Or you can just delete the stuff in those layers.

After you get the layers set, you can go in to select individual objects and change them. For instance, the Xs in the timber sections should be lightened up. The lines at the top of the ground should have their end caps turned square instead of round (look on the stroke palette). The borders on the hatches can be deleted.

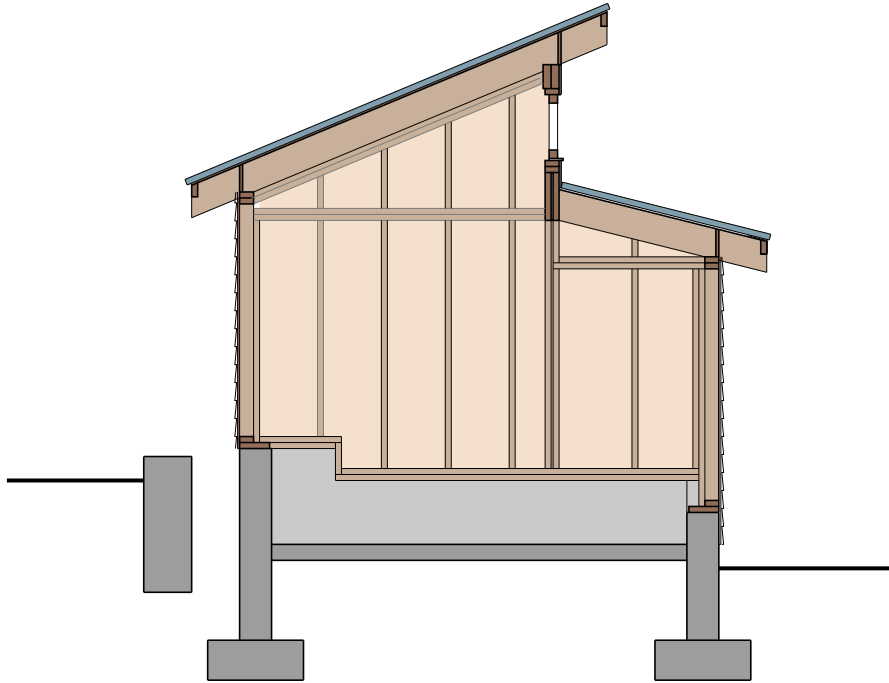
Select all the text. Set the fill to black and the stroke to None.

Some lines need dash repairing. The lines in question are those for the distant footings and the center lines for the dimensions. Just select them and in the Stroke palette change the “Dashed Line” settings maybe like so (and maybe if they have fill, set that to None):

Center Lines - 12pt 4pt 4pt 4pt

Footing Lines - 20pt 10pt

Live Paint to Quickly Color a Drawing



Live Paint offers a great way to go in to a line drawing and throw down colors quickly. First you should clean out dimensions hatches. Once that's done...

Select line work and click on the Live Paint tool (after you find it! Hint, it's behind Shape Builder tool.). If you are allowed to do Live Paint there will be a message "Click to make Live Paint group." Click.

Select a fill color and "paint." You can use the Alt key to select a color that you've already used.

